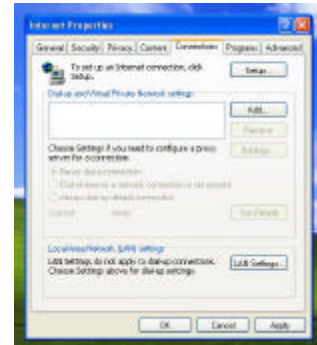


Instructions for Setting Up a Dial-Up Account with Windows XP Home Edition or Professional

1. Click on the Start Menu, move the mouse cursor to “Internet,” and with the button on the right side of the mouse, click on “Internet”. A menu appears. Click on “Internet Properties.”



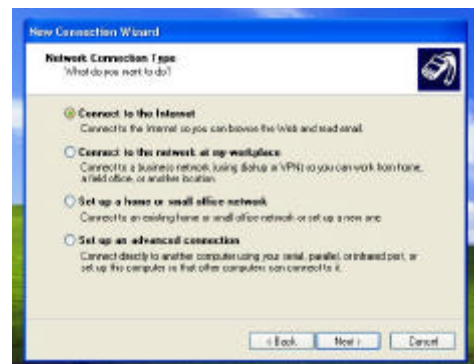
2. The “Internet Properties” window appears. Click on the tab labeled “Connections” and click on the “setup” button.

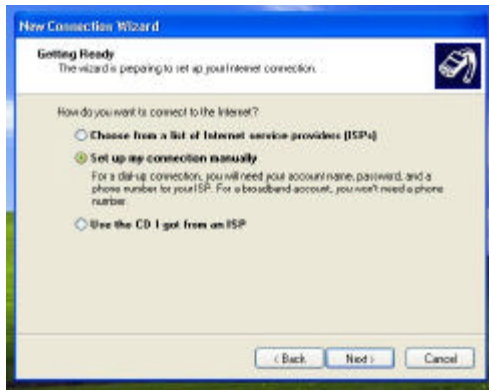


3. This starts the “New Connection Wizard.” Click “next” to continue.



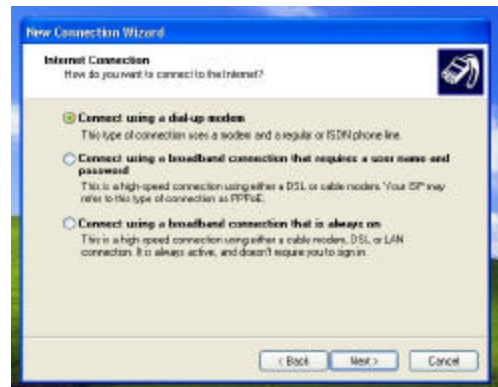
4. Select “Connect to the Internet” and click “next.”



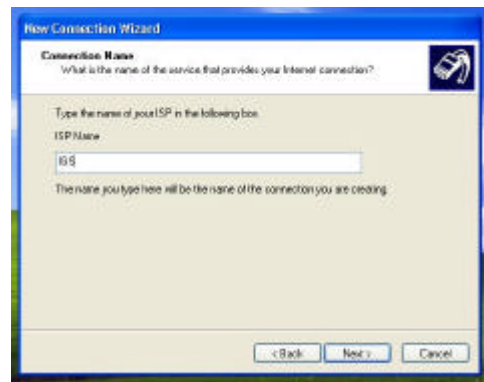


5. Select “Set up my connection manually” and click “next.”

6. Select “Connect using a dial-up modem.” Click next to continue.



7. Type in the name of your ISP: “IGS”. When finished, click next.



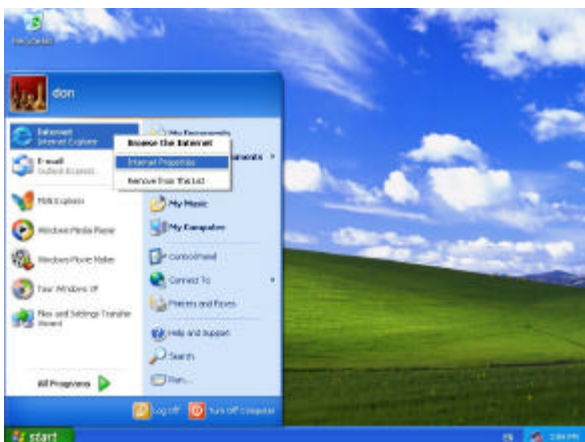
8. Type in the telephone number you use to dial IGS’s modems. You can find this number on your Personal Information Sheet where it says “Modem.” (For many 56K dial-up users in the KW area, the telephone number will be 883-0646). When finished, click next.



9. In this window, you must type in your username and password. Note that everything you type in on this page must be done using lowercase letters. Your username and password are case-sensitive (i.e. 'A' is a different letter than 'a'), so make sure you enter the information in lowercase. Click next.

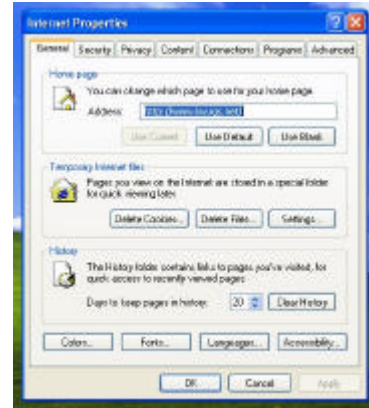


10. You have completed creating the dial-up connection settings. If you want an icon on your desktop for this setting, place a checkmark beside “add a shortcut to this connection to my desktop.” Click finish.

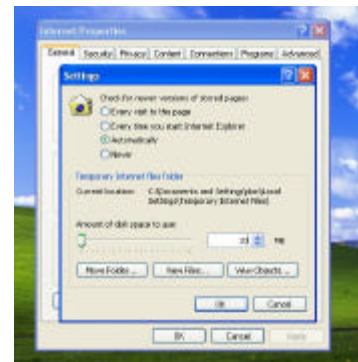


11. The wizard has closed and you should now be back to the desktop. Now we want to modify some of the settings we've created. Click on the Start Menu and right-click on “Internet.” On the menu that appears, click on “Internet Properties.”

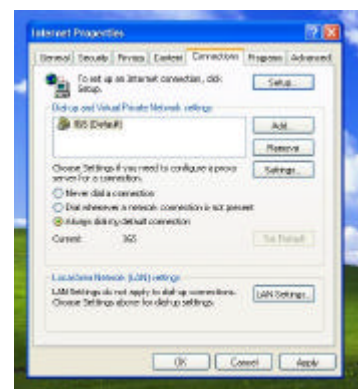
12. Under the “General” tab (should be the first tab you see), select the “Address” line inside the “Home Page” area. Delete the text on the line, and then type in www.kw.igs.net.



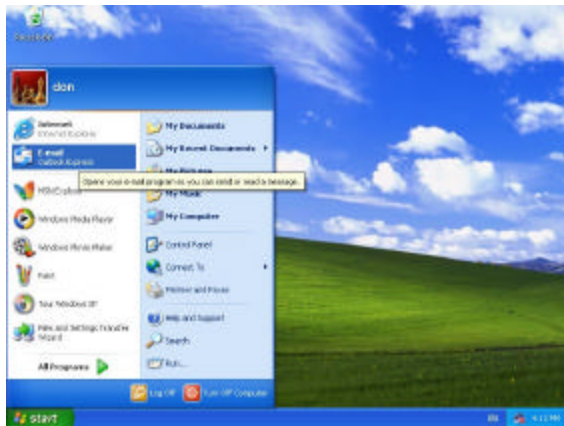
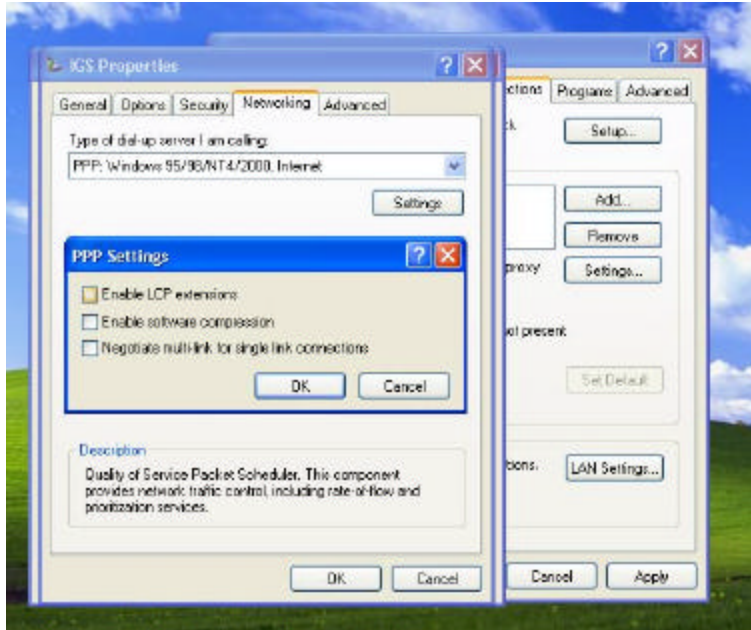
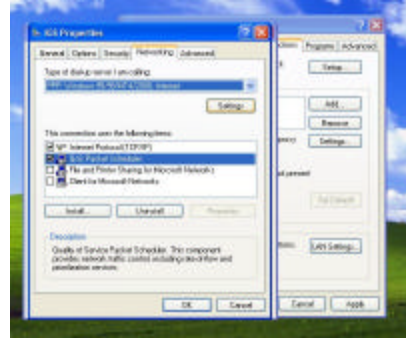
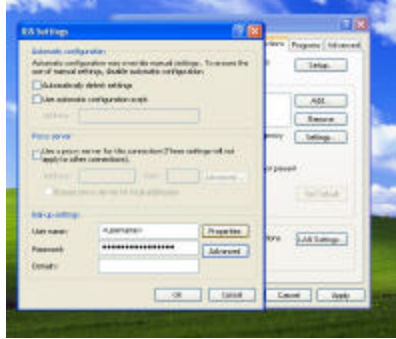
13. Inside the “Temporary Internet Files” area, click on “Settings.” In the window that appears, change the amount of disk space used from the ridiculously high number that is in there now to a more reasonable number (we suggest 10MB). Click on OK when finished.



14. Click on the “Connections” tab and make sure that “IGS” is set as the default connection. It will read IGS (default) if this is the case. If not, then select “IGS” with your mouse and click on “Set Default.” Once “IGS” is the default connection, select “IGS” and click on “Settings.”



15. In the window that appears, click on “Properties.” In the next window that appears, click on “Settings.” In the next window that appears, make sure that none of the three items in the window have checkmarks beside them. If you see checkmarks, click the item to remove the checkmark. Once all three items are unchecked, click OK to close this window. Click OK to all windows until all windows have been closed.



16. Click on the Start Menu and click on “E-mail.”

17. If this is the first time you have run this program, the “Internet Connection Wizard” will start. If you do not see this, click on Tools --> Accounts. In the windows that appears, click on New --> Mail.